

SERMON SERIES

REVEALING THE MESSIAH

- FEB 1 & 2 BLESSING NOT BURDEN — LUKE 6:1-11
FEB 8 & 9 THE POWERFUL REACH OF CHRIST'S COMPASSION — LUKE 7:1-17
FEB 15 & 16 ASKING GOD YOUR BIG QUESTIONS — LUKE 7:18-35
FEB 22 & 23 SCANDALOUS GRACE — LUKE 7:36-50

(SEE PAGE 4 FOR FULL LINE-UP)

Dear Victory Family,

As we step into this new month, I'm reminded of the love we often celebrate in February. While our culture focuses on sentimentality and romance, Scripture points to something far deeper: the love God has for each of us. 1 John 4:10 proclaims, 'This is love: not that we loved God, but that He loved us and sent His Son as an atoning sacrifice for our sins.' God's love is foundational and unchanging.

Romans 5:8 resonates with the same truth: 'But God demonstrates His own love for us in this: While we were still sinners, Christ died for us.' That means our shortcomings, our failures, and even our wandering hearts do not disqualify us from God's love. His love sought us out when we were far away, providing a path of redemption and hope through Jesus' sacrifice. It is a love that meets us exactly where we are, yet refuses to leave us there.

In this season, let us reflect on God's complete and transformative love. He calls us to draw near, not because we have everything figured out, but because He has already done everything required for our salvation. No matter where life's journey has taken you, remember that you are cherished by the One who created you. As we move through February, I encourage you to let God's love shape your thoughts, words, and actions. May we love one another out of the overflow of His endless grace, always finding true fullness in Him alone.

In Christ's love,

Pastor Todd Mathison



Todd Mathison, Lead Pastor
Denton Bennet, Associate Pastor
Susan Westland, Chaplain
Renee Bennett, Pastoral Intern

5946 E. University Drive, Mesa, AZ 85205
480-830-5024 | Office Hours: M-Th, 8am-4pm
VictoryLutheran.com





CHILDREN'S CHURCH

2-10 YEAR OLDS

**Begins February 9th
11am Contemporary Service**



CHILDREN'S CHURCH RETURNS TO VICTORY!

We are offering Children's Church for our 2-10 year olds during the 11:00am Contemporary Worship Service starting Sunday, February 9th. Children will be dismissed after the Children's Message and will be picked in the Nursery at the end of the 11:00am service. Parents interested in Children's Church will check in their children prior to the start of the service and will be given a nametag for themselves and their children. Two adults will be present with the children at all times. Lessons will be held in the Nursery.

OUR WORSHIP SERVICES

Saturday @ 4:00pm - Casual Traditional

Liturgical worship in a come-as-you-are atmosphere. The pastors do not "robe up", but the music and messages remain central to each service, and the familiar structure of traditional worship is followed.

Sunday @ 8:00am - Formal Traditional with Communion

Maintains a strong link to historical practices, honoring the Reformation's legacy and enduring Christian truths. Communion is offered at all 8:00am services. The Choir and Bell Choir regularly enrich both the 8:00 & 9:30am services.

Sunday @ 9:30am - Traditional Liturgical

Follows a clear liturgical order from the Lutheran Service Book, aligned with the seasons of Advent, Christmas, Lent, Easter, and Pentecost. Each season's themes, colors, and readings guide worship. Music is central, emphasizing congregational hymns, choirs, and organ, which enrich the service with sacred and classical works.

Sunday @ 11:00am - Contemporary

Blends relevant preaching with modern Christian praise music from guitars, drums, and keyboards for a dynamic atmosphere. We strive to make worship accessible to everyone. Children's messages are included, and starting February 9th, children ages 2-10 will be invited to their own teaching time in Children's Church.



The only national conference on Christian grandparenting!



Registration \$39
<https://brushfire.com/legacycoalition/simulcast/583031>

GRANDPARENT, YOU ARE INVITED!



SCAN ME

FRIDAY
FEB 21
2025

Victory
Lutheran
Church

Speaker line-up

Dr. Jeff Myers | Dr. Rob Rienow | Trudy Cathy White Harvey
Carey | Dr. James Banks | Dr. Crawford Loritts
Anne Graham Lotz & Rachel-Ruth Wright

This year's theme for Summit will empower grandparents to embrace their divine purpose and the crucial role they play in their families' spiritual journey.



WHAT'S
NEXT

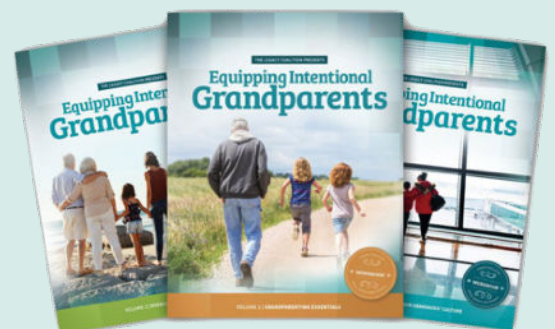
UPCOMING CHURCH-WIDE STUDY EQUIPPING INTENTIONAL GRANDPARENTS MONDAYS @ 9:30AM, MARCH 3-APRIL 7

Last year, you spent time with us learning that being an intentional grandparent matters to your family. We invite you back for a **NEW** event to equip and encourage you to be that spiritual leader. February 21st, we are hosting the nation's ONLY conference on this subject with gifted speakers encouraging you with ways you can be equipped.

AFTER THE CONFERENCE, we will embark on a six-week study to show how to pass on a resilient faith. This is an intentional plan to help you lead your family spiritually because we have a heart and a desire to see your family live the blessed life of a Christian family.

We thank God for your faith and see how badly you want your grandchildren to experience the same life-giving faith. We offer one more step in our desire to help you grow in this area and equip you with ways to see your family members begin or grow in their relationship with Jesus. The study will incorporate videos and discussions providing tangible tools to make a difference in your life and the lives of others. Our weekly study will meet each Monday morning at 9:30 beginning March 3rd and continue throughout Lent. A light continental breakfast and workbooks for the study will be available.

We live in a multi-generational time, with each generation equally important to Christ. Let's embrace our roles with how we relate to one another and grow stronger together!



Sermon Series Line-Up: "Revealing the Messiah"

From redefining the Sabbath as God's compassionate gift rather than a rigid burden, to unveiling His divine authority by healing the sick and raising the dead, Jesus clearly reveals Himself as the Messiah who meets the deepest needs of a weary world. Even amid honest doubts, like John the Baptist's, He graciously offers undeniable evidence of His power and underscores that genuine faith is always welcomed. Ultimately, through His extravagant forgiveness of the most broken and shamed, Christ shows that no one lies beyond His redeeming grace, inviting everyone into renewed hope and confident trust in His saving presence.

February 1 & 2 "Blessing Not Burden" Luke 6:1-11

(Communion at all Services)

Jesus shows that the Sabbath was never meant to be a rigid rule designed to weigh you down, but a loving gift intended to refresh and restore your soul. By healing on the Sabbath and allowing His disciples to pick grain, He reminds you that God's compassion far outweighs empty legalism and that your well-being matters deeply to Him. The Sabbath frees you to pause from your busyness, trust God's provision, and find genuine rest in His presence rather than being bound by man-made constraints.

February 8 & 9 "The Powerful Reach of Christ's Compassion" Luke 7:1-17

Jesus reveals His divine authority as the long-awaited Messiah, responding to the Centurion's remarkable faith by healing his servant from afar, and by raising a widow's son from the dead. Jesus crosses cultural barriers, honors law, expectant trust, and shows that even the most hopeless circumstances can be overcome by the power of His compassion. You are invited to trust in Christ's authority, confident that the same divine mercy that conquered death can bring hope and restoration to your toughest struggles.

February 15 & 16 – "Asking God Your Big Questions" – Luke 7:18-35

John the Baptist grapples with doubt about Jesus' identity, sending messengers to verify His credentials. Jesus responds with miraculous acts and compassionate words that show God's readiness to embrace your questions and prove His unchanging love. You too can bring our doubts to God with an expectant heart, finding hope, assurance, and His keeping power as He reveals Himself faithful in every season of life.

February 22 & 23 – "Scandalous Grace" – Luke 7:36-50

Jesus scandalizes the religious elite by welcoming a woman labeled a "sinner" into His presence and granting her extravagant forgiveness. God's mercy is extended to every kind of broken or judged person, with no one beyond His redeeming grace. Grow in assurance that Christ's forgiving love is always available, meeting you in your deepest shame and restoring you to new hope and purpose.



VICTORY LUTHERAN 2024-2025 CONCERT SERIES

Concerts are 3pm on Sunday*

An afternoon with the East Valley Pops Orchestra! Sunday, February 16, 2025

The East Valley Pops Orchestra is a 60+ member orchestra located in the East Valley, serving the communities of Mesa, Tempe, Gilbert, and Apache Junction since 1982. They have been under the direction of of Maestra Julie Mahoney for 30 seasons! They are a 501(c)(3) non-profit community group with a mission to donate each year to help support instrumental music programs in some of the area's budget-challenged public schools. In the 23/24 season they were able to give \$27,000 to local schools, helping to continue the love of music for future generations! They play music that is enjoyed by a wide audience, including movie themes, show tunes, light classical and patriotic melodies. This will be a wonderful afternoon of music and a great opportunity to bring a friend. As always, a reception will follow.

February 16 East Valley Pops Orchestra

March 9 Main Street Brass

March 30 Moravian Masterpieces:
A glimpse into the sacred music of Early America

***April 18** Good Friday Cantata, 4 & 6pm

Freewill offerings are gladly accepted.



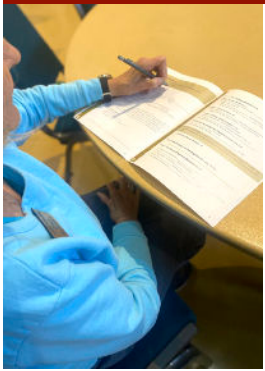
SCAN ME



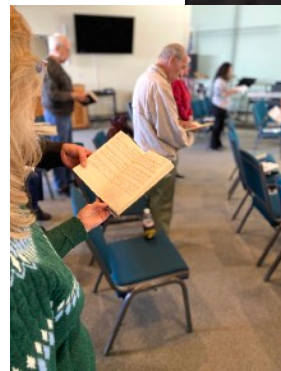
5946 E. University Drive, Mesa, AZ 85205 | 480-830-5024 | VictoryLutheran.com

Kristin Holton Prouty, Worship & Music Coordinator

January Events: Romans Study, LCMC Three Days of Prayer, Concert, Baptism



13th Annual
THREE
DAYS OF
PRAYER
JAN 7-9, 2025
LCMC.net

A close-up shot of a hand holding a lit candle.

Unlocking
your Legacy

Estate & Planned Giving Free Seminar

By Mark Johnson

Development Consultant

Recognized for his expertise in
Estate planning and
charitable gifting.



Scan the QR code or sign up
at the Welcome Desk.

Monday, February 10, 1:30-3:00pm

Estate & Planned Giving Seminar

Sponsored by Victory Lutheran Church Foundation

Embark on a journey of empowerment and foresight with
Victory's Estate & Planned Giving Free Seminar!

Learn about the different aspects of Estate Planning and why you should plan.



As you delve into the intricacies of estate planning, you'll find a multitude
of compelling reasons to secure your legacy:



- **Biblical Perspective on Estate Planning:** Gain insights into the spiritual and moral aspects of estate planning, aligning your financial decisions with biblical principles.
- **Avoid Probate:** Safeguard your loved ones from the complexities and delays of probate proceedings.
- **Reduce Estate Taxes:** Strategically plan your estate to minimize tax burdens and maximize the inheritance for your heirs.
- **Leave Gifts for Your Favorite Charity:** Extend your impact beyond your lifetime by supporting the causes dear to your heart.
- **Individual Consulting:** By attending this seminar, you will have the opportunity to set an appointment to meet in person with Mark Johnson the day after the seminar, to talk about any questions or concerns specific to your situation.
- **And Much More:** Check our website victorylutheran.com/events

Our presenter, Mark Johnson, is recognized for his expertise in estate planning and charitable gifting. He has presented numerous Estate Planning Workshops in churches around the country and has been a featured speaker at many conferences.

Don't miss this opportunity to shape your legacy and leave a lasting impact.

Register Online for Victory Lutheran Church's Estate & Planned Giving Seminar!

SUNDAY	MONDAY	TUESDAY	WEDNESDAY
<p>Love the LORD your God with all your heart and with all your soul and with all your strength. Deuteronomy 6:5</p> 		<p>PRAYER GROUP Meets Thursdays @ 10:00am</p> <p>Victory has an active prayer ministry comprised of an intercessory prayer chain, weekly prayer group, and a monthly Prayer & Praise Worship service held the 1st Thursday of the month at 10:00am. This service is led by members of our prayer team, with opportunities for anyone who feels called to also share in prayer.</p>	
<p>2 COMMUNION WEEKEND 7-11am Morning Fellowship, FH 8am Worship & Communion, WC 9:30am Worship, WC 11am ContemporaryWorship,WC</p>	<p>3 9-11:30am Food Pantry 9:30am Romans Study, FH 12:30pm GriefShare, C4 4pm Confirmation Class, LR 5:30pm Romans Study, FH</p>	<p>4 11am Winter Women's Life Group, meet in home 6:30pm Women's Bible Study, LR 7pm AA Men's Meeting, FS</p>	<p>5 9-11:30am Food Pantry 12:30pm Al-Anon, C4 1pm Men's Bible Study, LR 1pm Bell Choir Rehearsal, CH 6:30pm Choir Rehearsal, WC 8pm AA Meeting, FS</p>
<p>9 7-11am Morning Fellowship, FH 8am Worship & Communion, WC 9:30am Worship, WC 11am ContemporaryWorship,WC</p>	<p>10 9-11:30am Food Pantry 9:30am Romans Study, FH 12:30pm GriefShare, C4 1-3:30pm Stephen Ministry Training, B7 1:30pm Estate & Planned Giving Seminar, B11 4pm Confirmation Class, LR 5:30pm Romans Study, FH</p>	<p>11 9:30am Esperanza Study, FS 11am Winter Women's Life Group, meet in home 1pm Dementia Seminar, C4 1:30pm Mary Study, meet in home 2pm Naomi Bible Study, B7 6:30pm Women's Bible Study, LR 7pm AA Men's Meeting, FS</p>	<p>12 9-11:30am Food Pantry 11:30am S.A.F.E. Singles Event Lunch @ The Hub (off-site) 12:30pm Al-Anon, C4 1pm Men's Bible Study, LR 1pm Bell Choir Rehearsal, CH 6:30pm Choir Rehearsal, WC 8pm AA Meeting, FS</p>
<p>16 7-11am Morning Fellowship, FH 8am Worship & Communion, WC 9:30am Worship, WC 11am ContemporaryWorship,WC 3pm East Valley Pops Orchestra Concert, WC</p> 	<p>17 9-11:30am Food Pantry 9:30am Romans Study, FH 12:30pm GriefShare, C4 1-3:30pm Stephen Ministry Training, B7 4pm Confirmation Class, LR 5:30pm Romans Study, FH</p>	<p>18 8:30am-2:30pm Quilters, FH 11am Winter Women's Life Group, meet in home 3pm Council Meeting, FS 6:30pm Women's Bible Study, LR 7pm AA Men's Meeting, FS</p>	<p>19 8:30-11:30am Quilters, FH 9-11:30am Food Pantry 12:30pm Al-Anon, C4 1pm Men's Bible Study, LR 1pm Bell Choir Rehearsal, CH 6:30pm Choir Rehearsal, WC 8pm AA Meeting, FS</p>
<p>23 7-11am Morning Fellowship, FH 8am Worship & Communion, WC 9:30am Worship, WC 11am ContemporaryWorship,WC</p>	<p>24 9-11:30am Food Pantry 9:30am Romans Study, FH 12:30pm GriefShare, C4 1-3:30pm Stephen Ministry Training, B7 4pm Confirmation Class, LR 5:30pm Romans Study, FH</p>	<p>25 11am Winter Women's Life Group, meet in home 1:30-3:00pm Book Club, B7 6:30pm Women's Bible Study, LR 7pm AA Men's Meeting, FS</p>	<p>26 9-11:30am Food Pantry 9am S.A.F.E. Singles Event Feed My Starving Children Bus leaves @ 8am 12:30pm Al-Anon, C4 1pm Men's Bible Study, LR 1pm Bell Choir Rehearsal, WC 6:30pm Choir Rehearsal, WC 8pm AA Meeting, FS</p>

THURSDAY	FRIDAY	SATURDAY
 <p>Note: End-of-Year giving statements were mailed out January 16th.</p> <p>Have you moved or changed your phone #? Please help us by making sure we have your most current information. Address forms are available at the Welcome Center or you may email Kathy at kmichel@victorylutheran.com.</p>		<p>1</p> <p>COMMUNION WEEKEND 8am Men's Bible Study, FS 4pm Worship, WC</p> 
<p>6</p> <p>10am Prayer & Praise Worship Service, CH 11am Al-Anon Meeting, FS 11:30am Stephen Ministry, C4</p>	<p>7</p> <p>OFFICE CLOSED</p>	<p>8</p> <p>8am Men's Bible Study, FS 4pm Worship, WC</p>
<p>13</p> <p>10am Prayer Group, B7 11am Al-Anon Meeting, FS 6:30pm S.A.F.E. Singles Event Bingo Night (off-site) Doors open @ 4:30pm</p>	<p>14</p> <p>OFFICE CLOSED</p> 	<p>15</p> <p>8am Men's Bible Study, FS 3:30pm I-HELP Volunteer Appreciation, FS 4pm Worship, WC 7pm S.A.F.E. Singles Event World Champion Hoop Dance (off-site) Bus leaves @ 1pm</p>
<p>20</p> <p>10am Prayer Group, B7 11am Al-Anon Meeting, FS 11:30am Stephen Ministry, C4 12:30pm S.A.F.E. Singles Event Mesa Arts Center Free Concert (off-site)</p>	<p>21</p> <p>OFFICE CLOSED</p>	<p>22</p> <p>8am Men's Bible Study, FS 4pm Worship, WC</p>
<p>27</p> <p>10am Prayer Group, B7 11am Al-Anon Meeting, FS 12:30pm S.A.F.E. Singles Event Mesa Arts Center Free Concert (off-site) 1pm Germany Pilgrimage Info Meeting, B7</p>	<p>28</p> <p>OFFICE CLOSED 7:30pm S.A.F.E. Singles Event Johnny Cash Concert (off-site) Bus leaves @ 6:30pm</p>	 <p><i>Ash Wednesday</i> March 5 @ 4 & 6pm *with imposition of ashes</p>

UPCOMING EVENTS

MARCH 3-APRIL 7
Church-wide Study
Equipping Intentional Grandparents
Mondays @ 9:30am

MARCH 5
Ash Wednesday
4 & 6pm

MARCH 6
Prayer & Praise Service
10am in the Chapel

MARCH 8
Women's Ministry Luncheon @ 11am

MARCH 9
Commissioning of New Members

MARCH 9
Main Street Brass Concert, 3pm

MARCH 10
Estate & Planned Giving Seminar @ 1:30pm

MARCH 11
Dementia Care Partner Seminar @ 1pm

MARCH 12-APRIL 9
Lenten Worship @ 4pm with Soup Supper

MARCH 25
Book Club @ 1:30pm
"I Am Code: An Artificial Intelligence Speaks" by code-davinci-002

- CH = Chapel
- CY = Courtyard
- FH = Fellowship Hall
- FS = Fireside Room
- LB = Lobby
- LR = Luther Room
- PC = Prayer Chapel
- WD = Welcome Desk
- WC = Worship Center
- C4 = Community Room

YOUR IMPACT: BUILDING BRIGHTER FUTURES TOGETHER



A NOTE FROM FAMILY PROMISE

Dear Family Promise Community,

As we step into 2025, my heart overflows with gratitude for this remarkable family we've built together. Every day, I witness the transformative power of our community — staff, volunteers, donors, and partners — coming together to create pathways of hope for families facing homelessness.

As we launch into 2025, we have some truly exciting initiatives on the horizon that will expand our ability to serve more families in innovative ways. I look forward to sharing these developments with you through our [newsletter](#) in the coming months. Together, we'll continue to demonstrate that when a community joins hands, extraordinary transformation becomes possible.

Ted Taylor, CEO of Family Promise of Greater Phoenix

2024 IMPACT REPORT

Last year, Family Promise:

- Provided shelter to 177 families (577 individuals) for 21,256 nights
- Maintained an efficient average stay of 35.9 days
- Celebrated as 73% of our families secured employment
- Supported 69% of families in transitioning to stable housing

These numbers represent real families finding hope and stability through our community's embrace. Every night of shelter, every meal served, and every child tucked safely into bed reflects your commitment to building a stronger community.

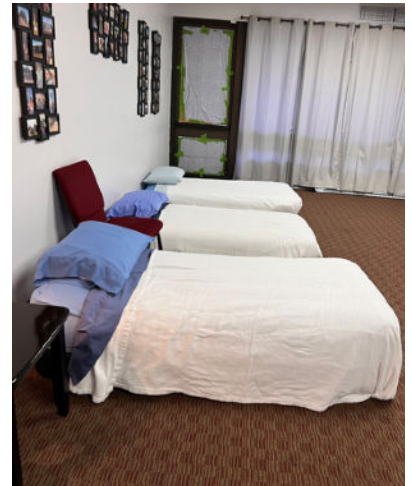
A Heartfelt Thank You to Our Volunteers and Supporters

We want to extend a huge thank you to all of our volunteers and those who have generously contributed to Family Promise Ministry. Your unwavering support has allowed Victory to provide not only our host week assistance but also financial aid to Family Promise.

This will be Bonnie Brehmer's final time co-coordinating the ministry, as she and Bob have moved to Scottsdale. We are deeply grateful for her leadership and dedication. Unfortunately, we have not yet been able to recruit additional volunteers to assist with coordination, which brings uncertainty to the future of this ministry.

Looking ahead, our next host week will be from October 12th – 19th. It may be our final host week at Victory. We ask for your prayers for the future of Family Promise here at Victory and for guidance on the direction this ministry will take moving forward.

If you'll be in Arizona during this time, please consider volunteering. Your help will make a difference in the lives of many. Thank you for your continued support.



DEMENTIA/ALZHEIMER CARE PARTNER SEMINAR

As you may know, the neurological condition known as Dementia that affects the brain, causing loss of memory, thinking, and reasoning has life altering effects of many individuals and families. This is a powerful three-part series on Dementia Education.

Session Two, February 11, deals with how we can learn to focus on what our loved ones can do and use that knowledge to make our caregiving journey easier and more fulfilling for us and our loved ones.

Session Three, March 11, teaches us to master three techniques that will make our days go by faster and will help keep our loved one happy and entertained.

Each session also includes a question-and-answer section at the end of each seminar, and adult day care is provided should anyone have the need for it. Adult day care is available. Please sign up at the Welcome Desk so that we may plan appropriately for those who will attend.

Questions? Contact Lynda Buechner at lyndabuechner@gmail.com



Session 1: JAN 14
Session 2: FEB 11
Session 3: MARCH 11

Dementia | Alzheimer Care Partner Seminar

Educational Series with Tools & Resources

Meets
2nd Tuesdays of the month @ 1pm

VICTORY LUTHERAN CHURCH MESA, AZ



DISCOVERING VICTORY NEW MEMBER CLASS 101

**Sunday
February 23
12:30-2:30pm**

(Complimentary lunch included)

Sign up at the
Welcome Desk

VICTORY LUTHERAN CHURCH

DISCOVERING VICTORY NEW MEMBER CLASS 101 Sun, February 23, 12:30-2:30pm

You will learn how Victory's mission (being and making disciples) and vision (building people) directly affect your life. We will explore how Victory provides a specific grace-center to your beliefs, life and mission, answering the question: Of all the churches to be part of, why choose Victory? This session counts as our "membership class" and you will be given the opportunity to become a member or associate member of Victory. But this is far more than an orientation; this is the starting point for everyone — members and non-members. And it could revolutionize the way you engage Victory as a spiritual-growth engine in your own Christian faith and life. Sign up at the Welcome Desk or online. **Complimentary lunch included.**

We love
because He first loved us!
1 John 4:19





MONTHLY BOOK CLUB TUESDAY, FEBRUARY 25, 1:30-3:00PM

Anyone who loves to read good books and discuss with others is welcome to join. February selection is "The Book Woman's Daughter" by Kim Michele Richardson. Please come prepared to discuss.



QUILTERS GROUP | FEBRUARY 18 & 19 @ 8:30AM

Quilters meet the 3rd Tuesday and Wednesday of the month, April thru June, in the Fellowship Hall. On Tuesday, we break for a potluck lunch at noon. Help needed with cutting squares, layering and tying knots. Bring your scissors. Come when you can — leave when you must.



GRIEF SUPPORT | MONDAYS @ 12:30PM

A program for help in your journey through grief after the loss of a loved one. Video presentation and discussion. Each session stands alone, so you may join us at any time.

If you would like more information you can find more info about GriefShare on their website at griefshare.org OR you may contact either Suellen Palya at 218-230-9562 or Pastor Susan at 480-830-5024 xt. 131.



FOOD PANTRY

The Food Pantry provides food boxes on Monday and Wednesdays from 9:00-11:30am. Utility & Rental Assistance available by appointment only. Please call 480-654-4539 and leave a message. Your unopened/non-perishable food and toiletry donations are welcome. Please drop them off in the brown bin near the front entry doors during office hours or during weekend worship.



STEPHEN MINISTRY

Stephen Ministry congregations equip and empower lay caregivers called Stephen Ministers to provide high-quality, confidential, Christ-centered care to people going through tough times. A Stephen Minister usually provides care to one person at a time, meeting with that person once a week for about an hour. Once a month, Stephen Ministers gather with their Stephen Leaders for supervision and continuing education. If you would like someone to come visit you or a loved one in the hospital, nursing facility or home please contact Pastor Susan Westland during office hours at 480-830-5024.



LIFE GROUPS

Women's Ministry Bible Study Groups | Tuesday, February 11 @ 9:30am

We meet the 2nd Tuesday of the month.
Esperanza Bible Study - 9:30am, Fireside Room
Mary Bible Study - 1:30pm, meet in homes
Naomi Bible Study - 2:00pm, Room B7



Women's Evening Bible Study Group | Tuesdays @ 6:30pm

Our group meets each Tuesday evening in the courtyard Luther Room.

Winter Women's LifeGroup | Tuesdays @ 11:00am, meet in home

We meet weekly at the home of Andrea Hill. Contact 720-320-9293 for details.

Men's Bible Study Group | Wednesdays @ 1:00pm

We meet weekly in the courtyard Luther Room.

Men's Morning Bible Study Group | Saturdays @ 8:00am

We meet weekly in the courtyard Fireside Room.



GENESIS PROJECT

Soup Kitchen in Apache Junction

They are the only soup kitchen in Pinal County. Genesis Project is a 501(c)3 faith-based non-profit soup kitchen. Their mission is to feed, clothe and hydrate the hungry and homeless, NO questions asked!



Women's Ministry Annual Spring Luncheon Saturday, March 8, 2025 @ 11:00am

We've got a great program again this year! Genesis Project is a community-focused, volunteer-run, non-profit serving the hungry and homeless. It takes a community of people to make Genesis Project run smoothly and our diverse network of supporters come together to make up Team Genesis! Whether you are sharing your time and talents here in the kitchen, sharing your finances, or are a prayer partner we are grateful to have you as part of the team! In our kitchen alone, over 120 individuals volunteer to plan, prepare and serve meals cooked from scratch in our full commercial kitchen. Genesis Project is supported and funded by community members, civic groups, and the faith community.

Come learn more about what Genesis Project is doing!

Tickets are \$10, catered meal and musical entertainment.

Tickets go on sale February 15th.

Services

All services are provided free of charge to guests at Genesis Project.

<p>Hot Meals Served Sunday-Friday 12pm-2pm</p>	<p>Clothing Closet Monday-Friday 11:30am-2pm</p>	<p>Secure Lockers Secure belongings with an indoor locker space</p>
<p>Mailing Address Mail handed out Monday-Friday 10:30am-2:00pm</p>	<p>Services Navigator By appointment Tuesday-Thursday 10:30am-2:30pm</p>	<p>Community Resources Center A one-stop-shop to access to much needed social services</p>

genesisprojectaz.org

**FEBRUARY
2025**

S.A.F.E.

SINGLES ACTIVITY FELLOWSHIP EVENTS

**SIGN UP REQUIRED FOR ALL EVENTS
ALL TICKETED EVENTS MUST BE PAID AT TIME OF SIGN UP.**

Bingo Night (Off-Site)

Thursday, February 13, Doors Open @ 4:30pm

Sunland Village, 4601 E. Dolphin Street, Mesa

Join us for the 2nd Thursday of each month. Doors open at 4:30pm for you to get a light meal, pick out your lucky seat and purchase your Bingo cards. Game begins at 6:30pm sharp! No admission after 6:30pm.



The Hub Grill & Bar (Off-Site)

Wednesday, February 12, 11:30am Lunch, 1925 S. Sossaman Rd., Mesa

We are meeting and eating at The Hub Grill & Bar located on the NE corner of Sossaman & Baseline. Recently rebuilt, their new menu includes: wings, sandwiches, burgers, soups, salads, pizza and calzones — all ranging from \$9-\$18.



World Championship Hoop Dance (Off-Site)

Saturday, February 15, 1:30pm, Heard Museum, 2301 N. Central Ave., Phoenix (Bus leaves at 1pm)

The World Championship Hoop Dance contest is an annual event attracting over 100 dancers from diverse tribal backgrounds, all vying for the prestigious title of World Champion and share for the \$25,000 prize. All events are outdoors (see flyer) and viewable from sloped, grassy-area seating, or bring your own chair or blanket, and protect yourself with sunhat, visors and sunscreen. Your ticket also avails you entry to the Heard Museum. Senior ticket \$22.00 + \$5.00 for bus transportation. Payment due at sign up. Deadline: Monday, February 9th.



Mesa Arts Center "Out to Lunch" - Free Concert Series (Off-Site)

Thursday, February 20 & 27, 12:30-1:30pm, 1 E. Main Street, Mesa (Bus leaves at 11:00am)

Each week is a different sound, and style in this concert series. Delicious Lunch items available for purchase. Bring a folding chair or blanket. Using the bus (\$5.00) depends on the number of sign-ups. Our meeting place is on Center Street by the Box Office. Meeting time 11:15-11:30am.

(Pick up a flyer for full concert line-up.)

Feed My Starving Children (Off-Site)

Wednesday, February 26, 9:00-11:30am, 1100 W. Grove Parkway, Tempe (Bus leaves @ 8:00am)

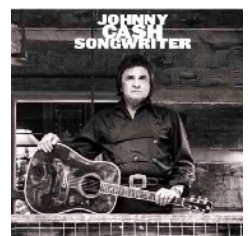
This monthly mission trip to the Christian based, non-profit organization, is on the 4th Wednesday of each month. You can stand and package the food, or sit and label it. Afterwards, we will enjoy fellowship at a fast food restaurant. Sign up and pay \$5.00 for bus by Feb. 16th.



"Johnny Cash Tribute Concert" (Off-Site)

Friday, February 28, 7:30pm, Hale Theater, 50 W. Park Ave. (Bus leaves at 6:30pm)

Honoring the "Man in Black" in a captivating tribute concert brings the iconic music of Johnny Cash to life. With resonant vocals, authentic sounds, and heartfelt storytelling, this concert is a must-see for lifelong fans and newcomers alike, celebrating the legacy of a true American legend. Tickets \$58.00 + \$5.00 for bus transportation. Payment is due when you sign up. Deadline: Tuesday, February 11th.



NOTE: All TICKETS will be handed out on the BUS or in the LOBBY of event site.

Luther-Bach Pilgrimage to Germany

September 25–October 5, 2025

INTEREST MEETING

FEBRUARY 27 @ 1:00PM

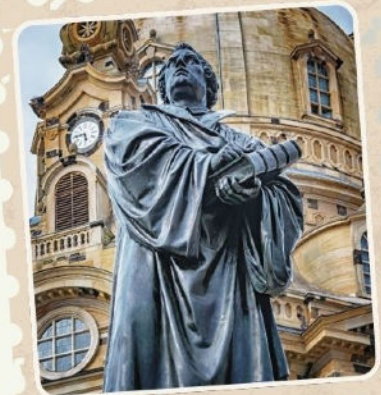
It is with great excitement that we invite you to join us — Pastor Todd & Anne Mathison and Kristin Holton Prouty — on a once-in-a-lifetime Luther-Bach Pilgrimage to Germany, taking place September 25–October 5, 2025.

This journey will immerse you in the spiritual and musical legacy of the Reformation. Together, we will explore stunning medieval towns, visit sites central to Martin Luther's life and ministry, and experience firsthand the music of Johann Sebastian Bach in the historic places that inspired him.

This pilgrimage promises to be an extraordinary blend of faith, music, fellowship, and history. We are eager to finalize details so each day resonates with the awe and inspiration of our shared heritage.

We look forward to meeting you as we prepare to grow in faith and perhaps worship side by side in the footsteps of Luther and Bach!

In Christ's Service,
Pastor Todd & Anne Mathison
Kristin Holton Prouty, Director of Worship & Music



"And whatever you do, whether in word or deed, do it all in the name of the Lord Jesus, giving thanks to God the Father through him." – Colossians 3:17





SCAN ME



Legacy
Grandparenting
Summit • 2025

**GRANDPARENT,
YOU ARE INVITED!**

**FRIDAY
FEB 21
2025**

**Victory
Lutheran
Church**

Speaker line-up

Dr. Jeff Myers | Dr. Rob Rienow | Trudy Cathy White
Harvey Carey | Dr. James Banks | Dr. Crawford Loritts
Anne Graham Lotz & Rachel-Ruth Wright

TEN WAYS TO LOVE

1. Listen without interrupting. (Proverbs 18)
2. Speak without accusing. (James 1:19)
3. Give without sparing. (Proverbs 21:26)
4. Pray without ceasing. (Colossians 1:9)
5. Answer without arguing. (Proverbs 17:1)
6. Share without pretending. (Ephesians 4:15)
7. Enjoy without complaint. (Philippians 2:14)
8. Trust without wavering. (Corinthians 13:7)
9. Forgive without punishing. (Colossians 3:13)
10. Promise without forgetting. (Proverbs 13:12)

• HAPPY •
*Valentine's
Day*

A DOSE OF DAILY HOPE

8am Daily

Bible verse text message

Weekdays

Brief Inspirational Video

Subscribe by texting the word
victory to **888-897-5573**



Be sure to follow, like and
subscribe to our channel!